

Perth County
ONTARIO • CANADA

Perth South

COMMUNITY PROFILE





WELCOME TO PERTH SOUTH

TABLE OF CONTENTS

- LOCATION..... 3**
 - Transportation
- OUR COMMUNITY 4-5**
 - Map
- OUR PEOPLE..... 6-7**
 - Population & Demographics
 - Education
 - Household Income
 - Housing Prices
- WORKFORCE & INDUSTRY..... 8-9**
 - Labour Force
 - Business Size and Industry
 - Farm Size and Type
- UTILITIES 10**
 - Electricity Rates
 - Natural Gas Rates
- INVESTMENT 11**
 - Tax Rate Comparison
 - Provincial Corporate Income Tax
 - Federal Corporate Income Tax
- BUSINESS RESOURCES..... 12**

Located in Perth South, Finnie Distributing produces key ingredients for pet food products that are shipped all over the world.



Perth County Economic Development and Tourism Office
 t 519-271-0531 ext 150 e ecdev@perthcounty.ca

perthcounty.ca   

The information within this profile is considered to be true and correct at the date of publication. The information may change without notice and Perth County is not in any way liable for the accuracy of the information printed or stored or in any way interpreted, applied or used by a user.

Perth South is centrally located in midwestern Ontario.

Approximately 6.0 million people live within 250 kilometres (150 miles) of Perth County.

Less than an hour drive to Stratford, the Town of St. Marys, Ingersoll, London, Woodstock, Kitchener, and Waterloo, Perth South has a trade market area of over 900,000 people.

Perth South is well served by three carriers providing daily passenger and freight rail services and is located within a 1.5 hour drive of five international shipping ports.

There are five international airports that serve the region all located within a 1.5 hour drive equipped to handle corporate, freight and recreational flights.

More than half of the North American industrial market is within one day's trucking distance.

Perth South also offers affordable public transportation. The PC Connect transit service connects the communities of Perth County with Stratford, St. Marys, Kitchener/Waterloo and London.

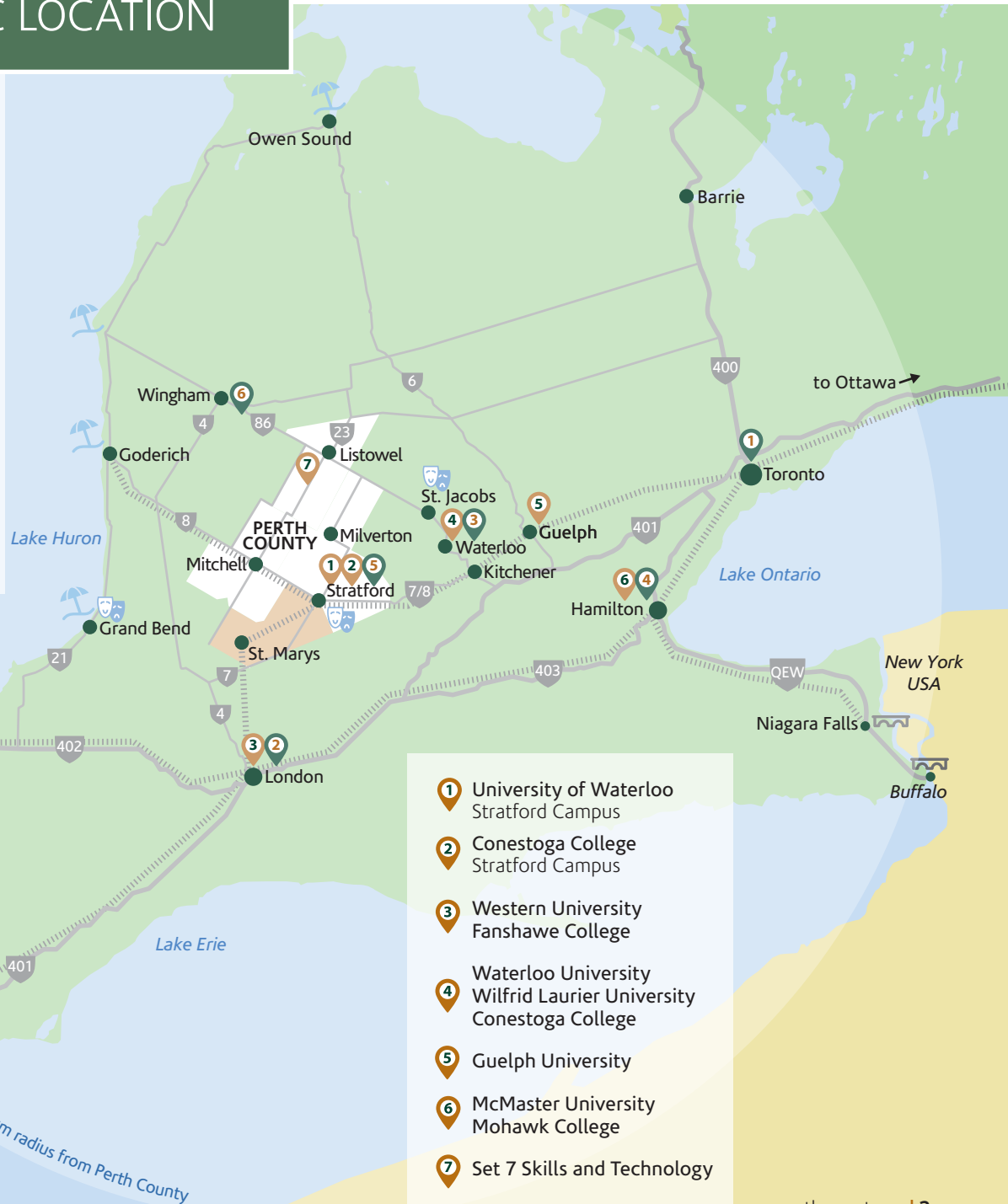
PC Connect routes and schedules can be found at PerthCounty.ca/pconnect.



STRATEGIC LOCATION

- 1 Toronto Pearson International Airport
- 2 London International Airport
- 3 Region of Waterloo International Airport
- 4 Hamilton International Airport
- 5 Stratford Municipal Airport
- 6 Wingham Airport

- Rail
- Highways
- International Border Crossing



- 1 University of Waterloo Stratford Campus
- 2 Conestoga College Stratford Campus
- 3 Western University Fanshawe College
- 4 Waterloo University Wilfrid Laurier University Conestoga College
- 5 Guelph University
- 6 McMaster University Mohawk College
- 7 Set 7 Skills and Technology



OUR COMMUNITY

Perth South is a prosperous community with the highest average household income in the county. It's 3,776 residents enjoy a high standard of living and Perth South has a great deal to offer its businesses.

Innovation abounds in the entrepreneurs that call Perth South home. Businesses such as Stonetown Supply, Klomps Home & Garden, McCully's Hill Farm, Stonetown Artisan Cheese, McLean Taylor Construction, D&S Downham Equipment, Stratford Farm Equipment and Hoffmeyers Mill have made a name for themselves well beyond Perth County.

A largely rural community with a strong agri-business sector, Perth South has a broadband fibre service available to homes and businesses, provided by community-owned Quadro Communications. As "Gig Certified" service provider and recipient of the "Smart Rural Community" designation, Quadro helps to connect these successful Perth South businesses to their worldwide customers.



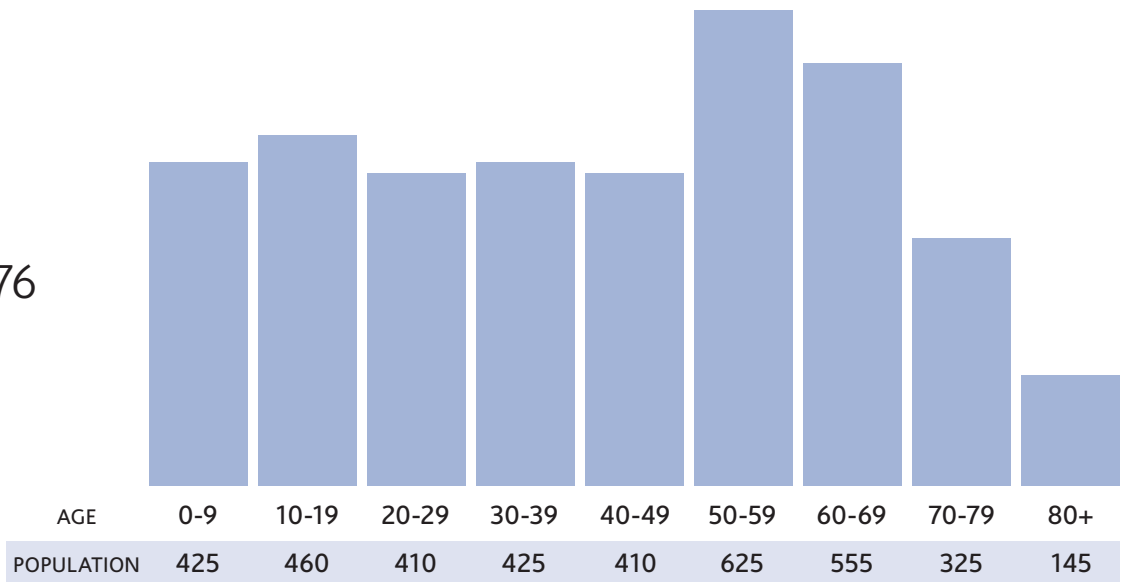
Abundant agricultural production in Perth South has resulted in the area being referred to as "Ontario's food basket".



OUR PEOPLE

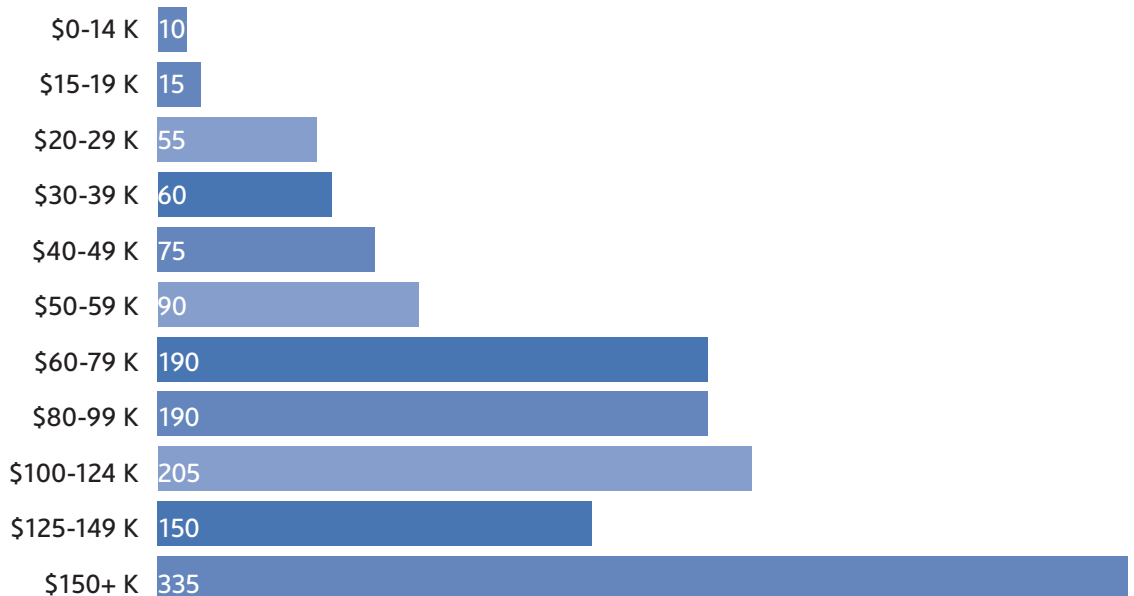
Population 3,776

(Source: Stats Can, 2021)



Household Income

(Source: Stats Can, 2021)





Education Attainment

(Source: Stats Can, 2021)

325+ Skilled Trades

1300+ College & University

1005+ Secondary School

Major Field of Study

(Source: Stats Can, 2021)

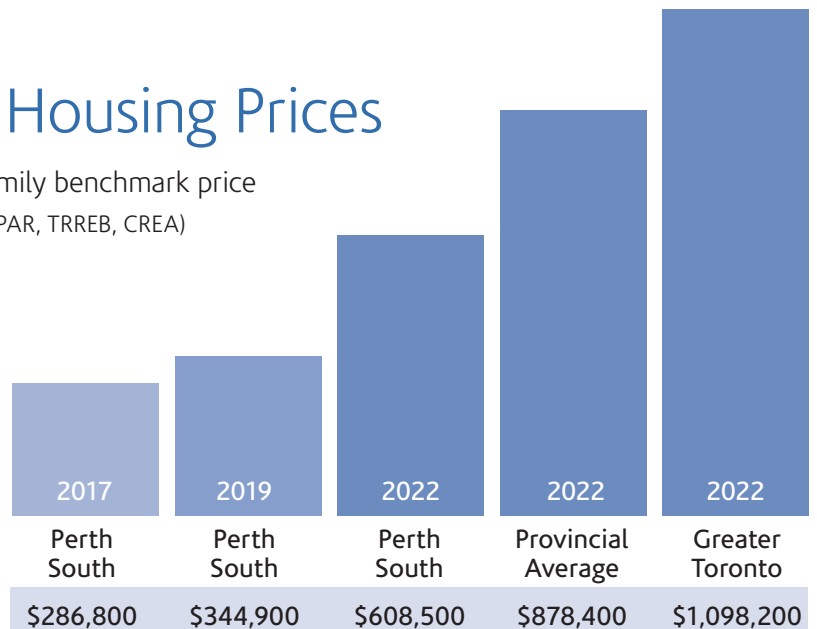
Health & Related Fields	320
Agriculture & Natural Resources	185
Protective & Transportation Services	105
Humanities	40
Visual & Performing Arts	30



Housing Prices

Single family benchmark price

(Source: HPAR, TRREB, CREA)



Stonetown Artisan Cheese located in Perth South is the maker of award-winning, hand crafted Alpine style cheese from fresh local ingredients.



WORKFORCE & INDUSTRY

Labour Force Participation

(Source: Stats Can, 2021)

	Participation	Employment	Unemployment
PERTH COUNTY	72.9%	67.7%	7.3%
ONTARIO	62.8%	55.1%	12.2%

Labour Force by Occupation

(Source: Stats Can, 2021)

Trades & Transport	460
Natural Resources	415
Sales & Service	370
Business & Finance	335
Manufacturing	195
Education, Law & Government	150
Health	135
Sciences	95
Management	45
Arts, Culture & Sport	45

Labour Force by Industry

(Source: Stats Can, 2021)

Manufacturing	365
Construction	285
Health Care	225
Retail	190
Wholesale	110
Transportation	105
Professional Services	95
Education	90
Accommodation	80
Other	80
Public Administration	80
Finance	70
Administration	70
Arts & Entertainment	40
Real Estate	15
Information	10





Industry

(Source: Stats Can, 2021)

Number of Businesses

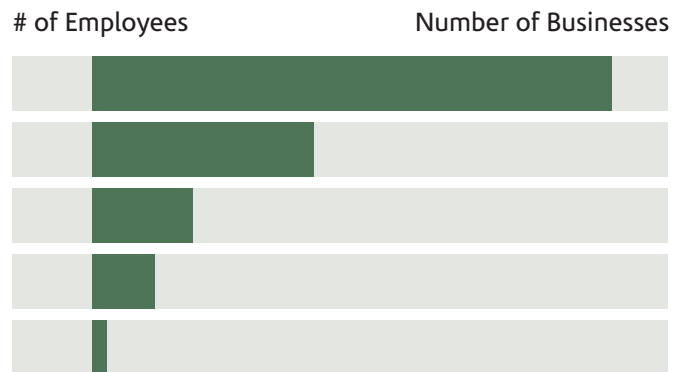
Agriculture	352
Real Estate	105
Construction	63
Retail	22
Manufacturing	20
Professional Services	18
Health Care	18
Wholesale	17
Transportation	17
Finance	16
Administration	14
Other Services	13
Management	7
Accommodation	7
Mining & Quarrying	5
Utilities	4
Education	3
Arts & Entertainment	2

Most of Perth South is prime agricultural land, with agriculture representing one of our most significant economic and community assets. Agricultural practices interact with natural heritage features in a number of ways including: agricultural drainage, nutrient management, land clearing and tile draining for agricultural production and the pasturing of livestock.



Business Sizes

(Source: Business Register, December 2021)



549 farms in Perth South

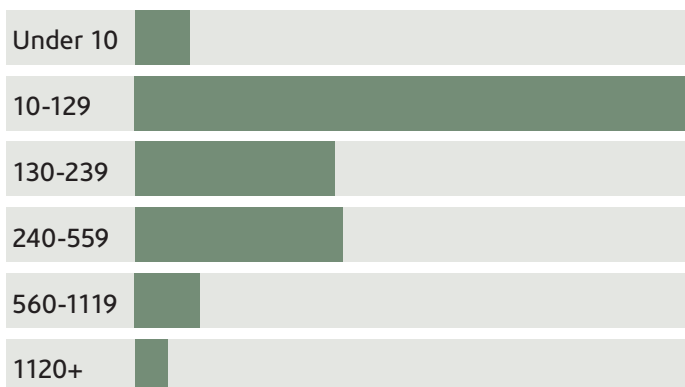


Perth South is often referred to as "Ontario's food basket" as it is one of the region's main producers of pork, beef, poultry, dairy products, cash crops and organic produce.

Farms by Size

(Source: OMAFRA Census of Agriculture 2021)

Number of acres



Farms by Industry Group

(Source: OMAFRA Census of Agriculture 2021)

Number of farms

Oilseed and grain farming	298
Dairy cattle and milk production	59
Hog and pig farming	43
Poultry and egg production	41
Beef cattle ranching and farming	37
Other animal production	27
Other crop farming	20
Sheep and goat farming	11
Vegetable and melon farming	8
Greenhouse, nursery and floriculture	4
Fruit and tree nut farming	1



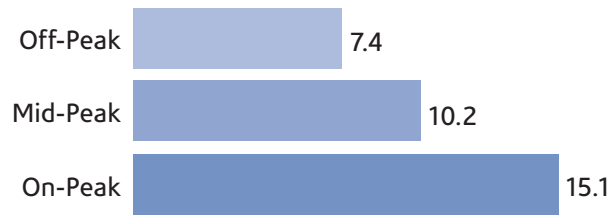
UTILITIES

Perth South enjoys a rural lifestyle while being globally connected. Quadro Communication’s Fibre Optic Network was named a “top performing broadband provider,” received the “Smart Rural Community” and “Internet Service Provider of the Year” awards, and was the first Canadian company to receive Rural Broadband Association’s “Gig Certified” recognition due to its capability to deliver Gig service to any customer on their fiber optic network.



Electricity Base Charges

¢/kWh (Source: Hydro One, 2022)



Comparative Electricity Rates

Canadian ¢/kWh (Source: Invest Ontario)



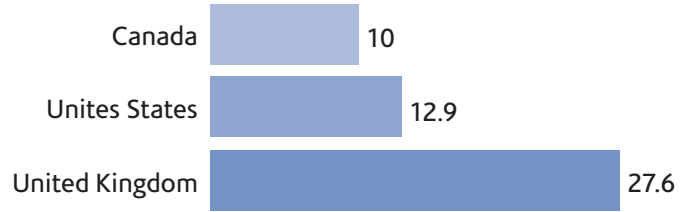
Natural Gas Base Rate

(Source: Statista 2021)



Comparative Natural Gas Rates

US dollars per megawatt hour (Source: Statista 2021)





TAXES

Tax Rates (Source: Township of Perth South, 2022)

Assessment Class	Code	Total Rate
Residential/Farm	RT	0.008619900
Commercial Occupied	CT	0.017640400
Commercial New Construction	XT	0.017640400
Commercial Excess Land	CU	0.017640400
Commercial Vacant Land	CX	0.017640400
Industrial Occupied	IT	0.022761430
Industrial New Construction	JT	0.022761430
Industrial Excess Land	IU	0.022761430
Industrial Vacant Land	IX	0.022761430
Pipelines	PT	0.020421060
Farmlands	FT	0.002154980
Managed Forests	TT	0.002154980

Tax Rate Comparison Data

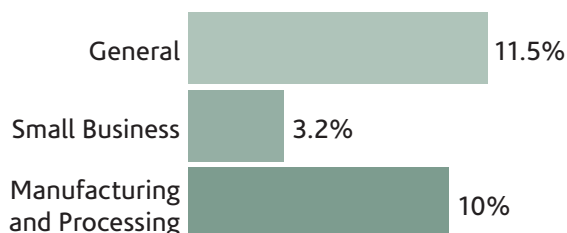
(Source: Municipality, 2022)

Region	Industrial	New Construction (Industrial)	Commercial	Residential
Perth County: Perth South	2.3%	2.3%	1.8%	0.9%
Perth County: North Perth	3.0	3.0	2.2	1.2
Perth County: Perth East	2.4	2.4	1.8	0.9
Perth County: West Perth	2.6	2.6	1.9	1.0
Waterloo	2.8	2.8	2.8	1.1
Kitchener	2.8	2.8	2.8	1.1
London	3.3	3.3	3.3	1.1
Woodstock	4.5	4.5	3.5	1.5
Stratford	4.1	4.1	3.8	1.4
St. Marys	4.0	4.0	2.8	1.4



Provincial Corporate Income Tax

(Source: Government of Ontario)



Federal Corporate Income Tax

(Sources: Canada Revenue Agency, Government of Canada)





Business Resources

The Stratford-Perth Centre for Business

offers advisory services and training for new and existing small business in all sectors.
stratfordperthbusiness.ca

Perth Community Futures

provides business support through customized loan programs.
perthcfdc.ca

Partners in Employment works with job seekers and employers to match talents and skills to employer's recruitment needs.

partnersinemployment.on.ca

Conestoga Career Centre provides job search assistance, career advice, job postings and education and training information to the public.

conestogac.on.ca/caa/careercentre

Stratford Accelerator Centre is focused on accelerating the growth and maturation of early-stage technology and digital media companies.

acceleratorcentre.com

Technical Training Group provides skills training programs necessary for professional trades, including welding apprenticeship training.

technicaltraininggroup.org

Set7 Skills and Technology provides residents of North Perth and Region access to world class training in their own community, offering online and in-person instruction via SET7 at local campuses. set7.ca

We invite you to contact Perth County's economic development and tourism office. We can provide you with the guidance you need to locate and grow in Perth County. We're here to support you with:

- Site selection
- Grant and loan programs
- Statistics, maps, demographics, and community information
- Connections to local landowners, developers, municipal offices, and real estate
- Business start-up and expansion resources
- Labour strategies
- Training providers

Reach out to us today.

Your business is our pleasure!

Perth County
Cultivating Opportunity

Perth County Economic Development and Tourism Office
1 Huron Street, Stratford, Ontario, Canada, N5A 5S4
t 519-271-0531 ext 150 e ecdev@perthcounty.ca

perthcounty.ca   